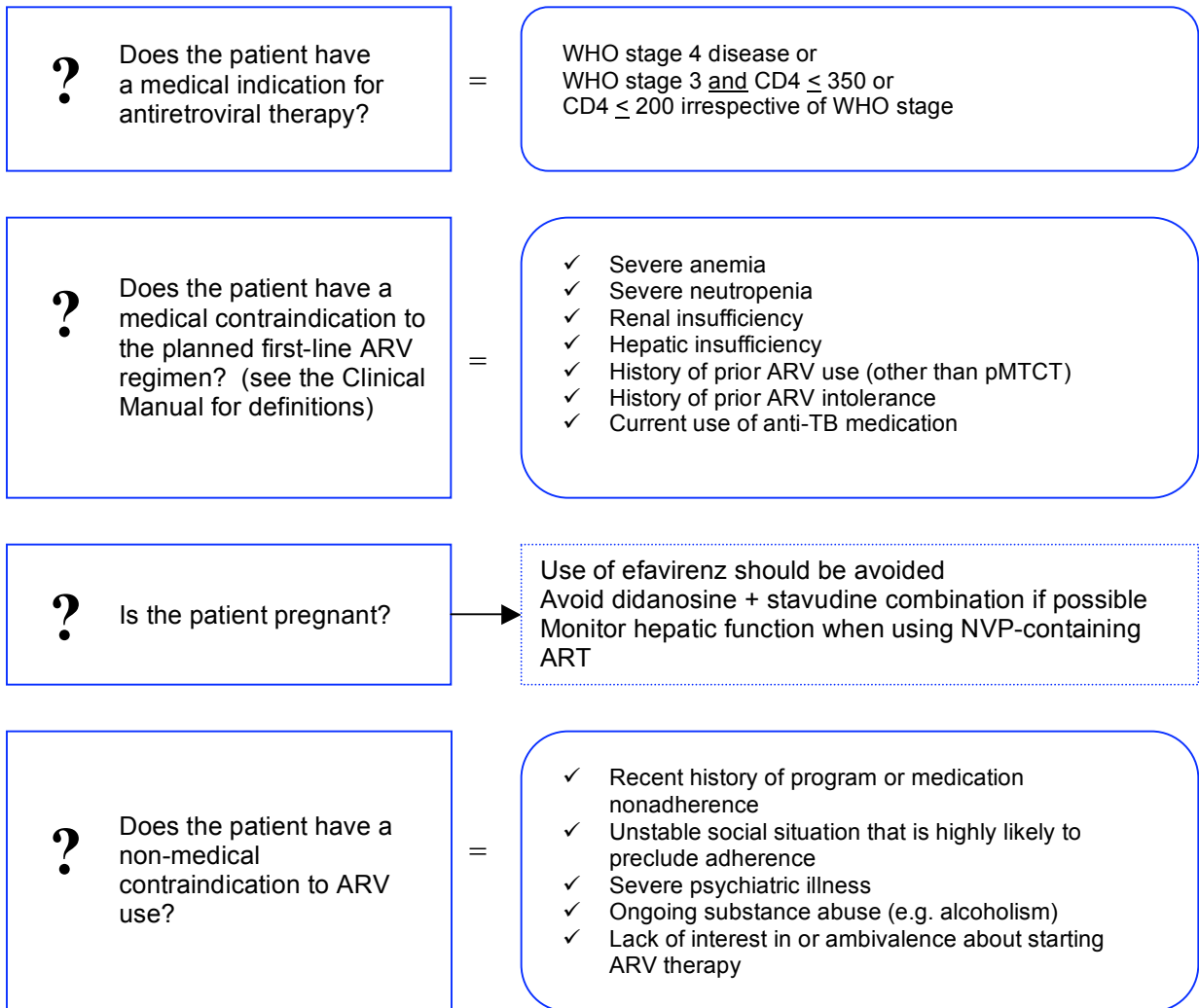
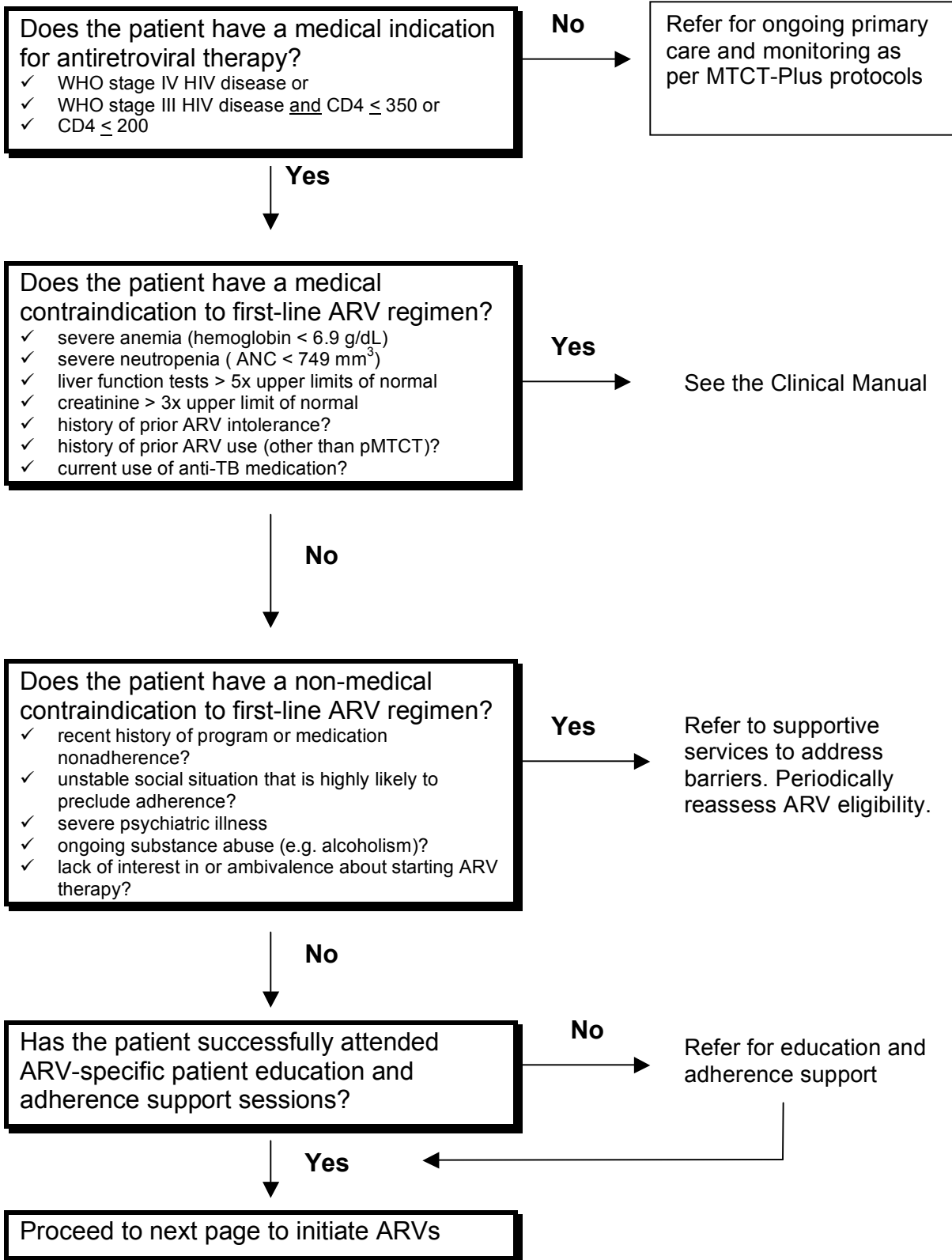
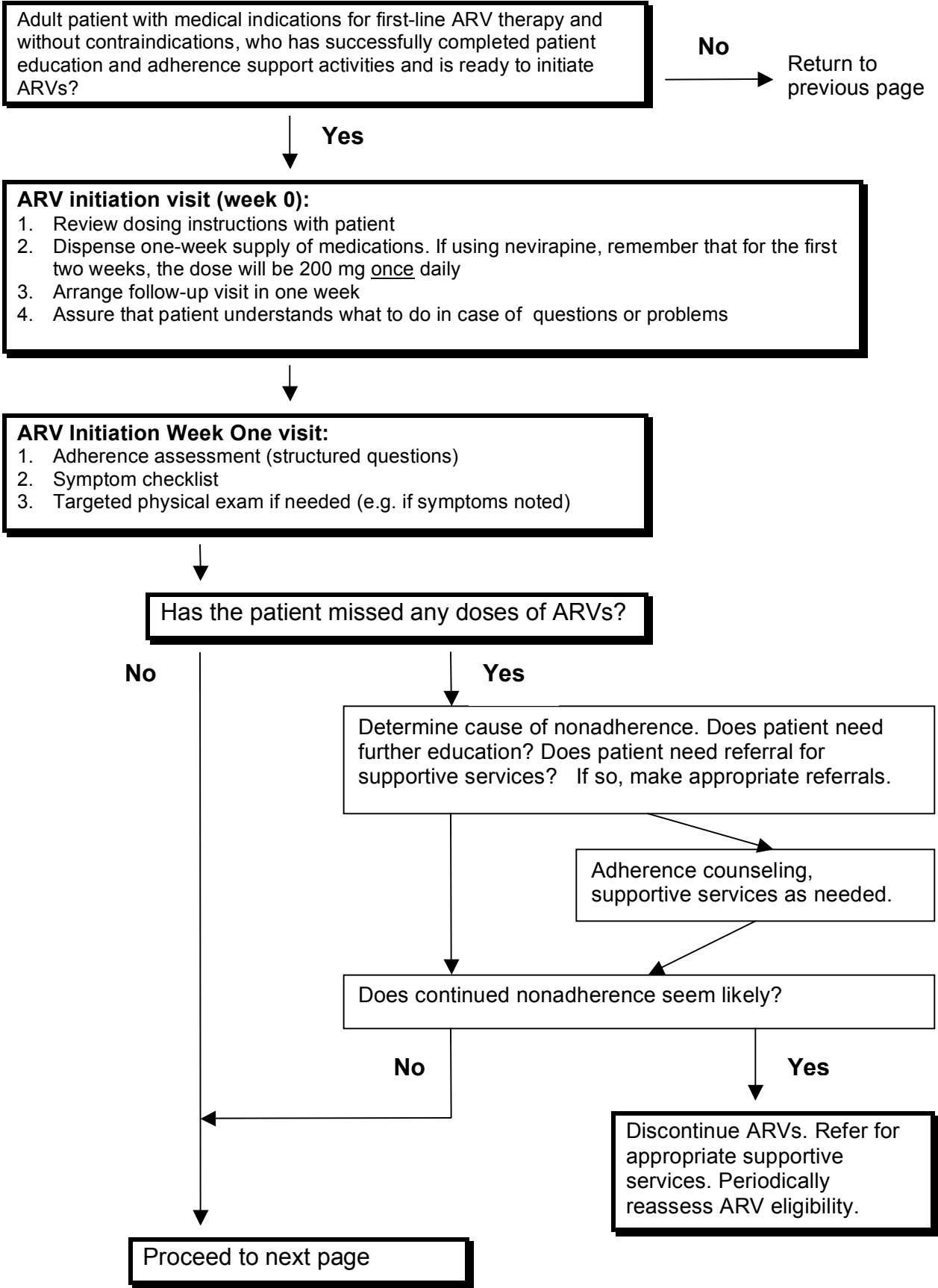


Initiating the First-Line Regimen

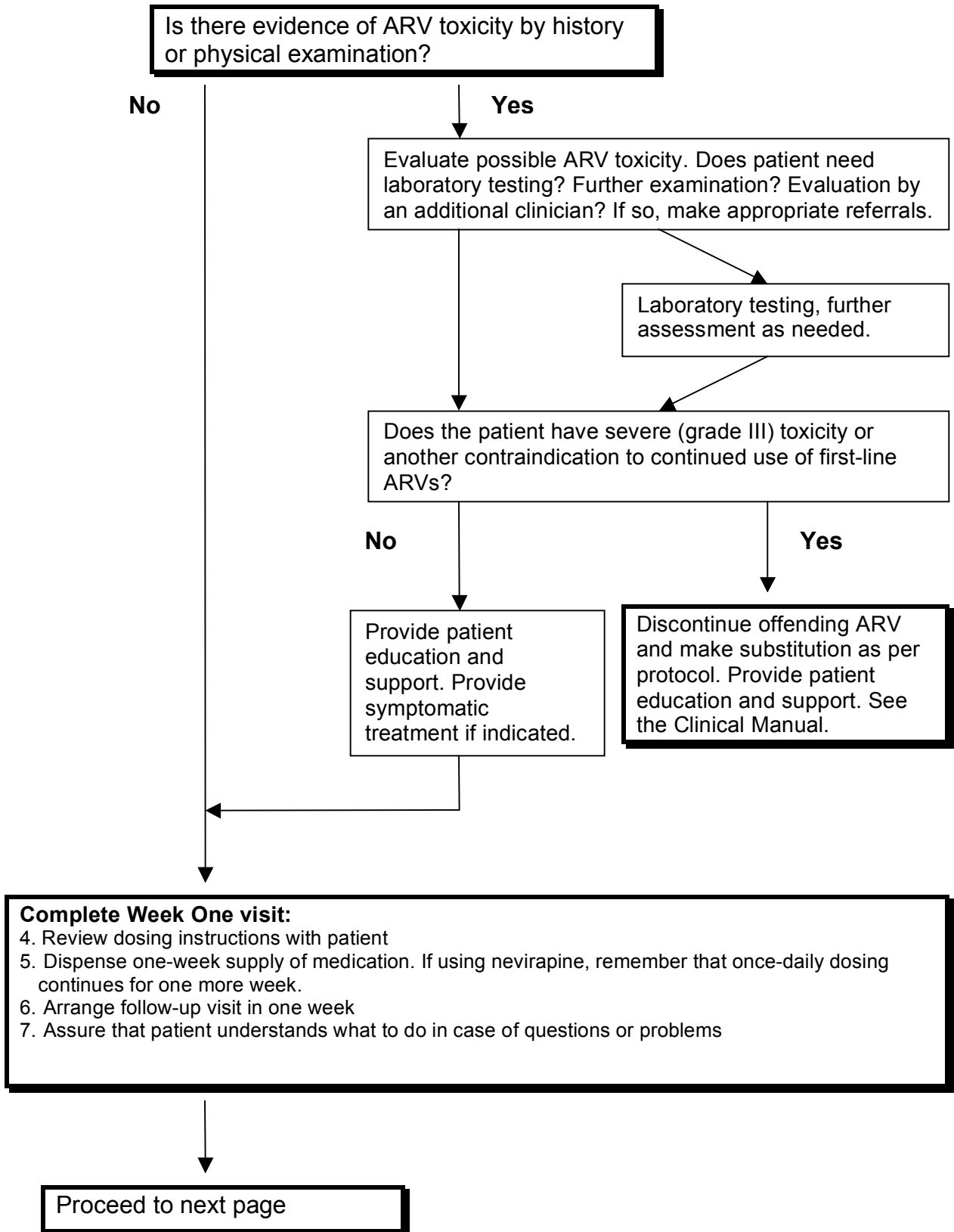


Adult Antiretroviral Initiation Flowchart





Week One visit, continued...



ARV Initiation Week Two visit:

1. Adherence assessment (structured questions)
2. Symptom checklist
3. Targeted physical examination if needed (e.g. if symptoms noted)

Evaluate and manage nonadherence and/or drug toxicity as outlined in “Week One,” above. If no problems with adherence or toxicity and no contraindications to continued ARV therapy:

4. **If using nevirapine, escalate to twice-daily dosing.**
5. Review new dosing instructions with patient.
6. Dispense one-week supply of medication.
7. Arrange follow-up visit in one week
8. Assure that the patient understands what to do in case of questions or problems

ARV Initiation Week Three visit:

1. Adherence assessment (structured questions)
2. Symptom checklist
3. Targeted physical examination if needed (e.g. if symptoms noted)

Evaluate and manage nonadherence and/or drug toxicity as outlined in “Week One,” above. If no problems with adherence or toxicity and no contraindications to continued ARV therapy:

4. Review dosing instructions with patient.
5. Dispense one-week supply of medication.
6. Arrange follow-up in one week.
7. Assure that the patient understands what to do in case of questions or problems

ARV Initiation Week Four visit:

1. Adherence assessment (structured questions)
2. Symptom checklist
3. Targeted physical examination

Evaluate and manage nonadherence and/or drug toxicity as outlined in “Week One,” above. If no problems with adherence or toxicity and no contraindications to continued ARV therapy:

4. Review dosing instructions with patient.
5. Dispense two-week supply of medication.
6. Arrange follow-up in one week.
7. Assure that the patient understands what to do in case of questions or problems